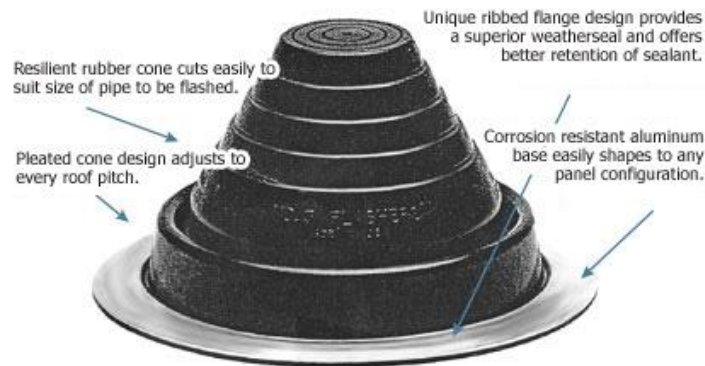


SAMSON METALS Ltd.

PIPE FLASHING



	Base Size	O.D. Pipe	EPDM	Silicone
#2	6"	1¾" - 3"	✓	Special Order
#3	8"	¼" - 5"	✓	✓
#4	10"	3" - 6¼"	✓	✓
#5	11"	4¼" - 7¾"	✓	✓
#6	12"	5" - 9"	✓	✓
#7	14"	6" - 11"	✓	Special Order
#8	17"	7" - 13"	✓	✓
#9	25 ½"	9" - 19"	✓	✓

***Note:** When used on roofs where pitch is steeper than 20° (4-in-12 or more), or when used on deep ribbed profile panel (1½" deep corrugation or more), consider using the next larger size flashing that will accommodate the same pipe diameter.

INSTALLATION



- 1 Cut to pipe diameter marked on Flashers (this is approximately 20% smaller than the diameter of the pipe).



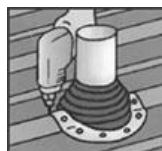
- 2 Slide the Flashers down the pipe, using water to lubricate if necessary.



- 3 Form and bend the aluminum base of the Flashers to fit the surface of the roof.



- 4 Seal the Flashers by applying urethane / silicone sealant between the Flashers and the roof. Use a large slot screwdriver to press the base down tightly.



- 5 Fasten the Flashers with weather-resistant fasteners to complete the seal.