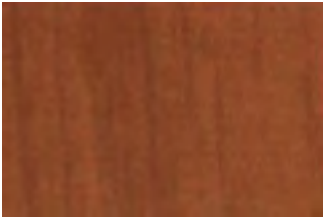


PRINTED SERIES

PVDF (Prepainted Steel) - WOODGRAIN



SADDLE



FRONTIER



ACORN



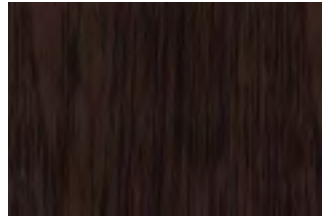
GUNSTOCK



ESPRESSO



DURANGO



HOMESTEAD



AUTUMN



WAGONWOOD



PON DEROSA



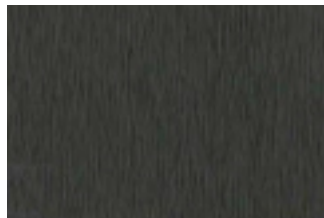
CANYON



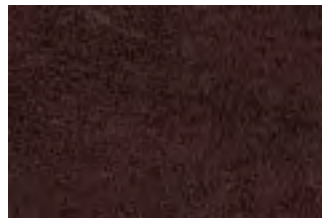
BARN BOARD



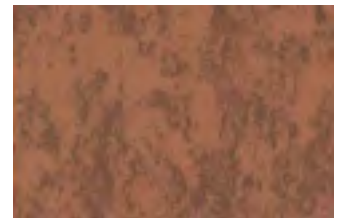
LIGHT ZINC



DARK ZINC



RUSTIC RED



AGED COPPER

POLYESTER (Prepainted Steel) - WOODGRAIN



LIGHT PINE



KNOTTY PINE



ASH WOOD



CONCRETE



CORTEN



HERITAGE

THE PRINTECH PROCESS

Printech® is a luxurious, value-add product offered by . Our Printech WOODGRAIN SERIES is available in a variety of natural colors and patterns offering an authentic woodgrain look providing the aesthetic you need for your project's interior or exterior applications.

Printech products are manufactured using an offset gravure printing process. The offset gravure printing process utilizes cylinders that have digital patterns etched into the surface. The etched cylinder rotates in an ink bath and ink collects within the etched pattern, with the excess ink being scraped from the cylinder. The inked pattern is then transferred from the etched cylinder to a rubber-covered transfer roll. From there the inked pattern transfers to the steel substrate by passing between the transfer roll and an impression roll.

Printech WOODGRAIN SERIES ... the aesthetics of wood with the benefits only steel can provide.

PROPERTY	PRINTECH COATING TEST METHOD	PRINTECH COATING SPECIFICATION
Dry Film Thickness	ASTM D 1400-94 ASTM D 1005-95	0.75-1.85 Mil 0.90-1.15 Mil
Specular Gloss	ASTM D 523-89 @ 60°	10-15
Humidity Resistance	ASTM D 2247 (100% relative humidity @ 95°)	Passes 2,000 hrs. with no field blisters
Salt Spray	ASTM B 117 (5% salt spray @ 95°)	Passes 1,000 Hrs. with < 5% #6 blisters
Acid Pollutant Resistance	ASTM D 1 308-87 20% sulfuric acid 18 hours, 10% muriatic acid 15 minutes	NO EFFECT
Graffiti Resistance	ASTM D 6578 (Cleanability of Defaced Panels spray paint, pens, etc.)	NO EFFECT
Abrasion Resistance	ASTM D 968-93 (to expose 5/32" of substrate)	100 Litres
Chalk Resistance	ASTM D 4214 (Florida exposure @ 45°S)	Rating not < 8 @ 20 yrs.
Color Retention	ASTM D 4214 (Florida exposure @ 45°S)	Rating not >5 Δ @ 20 years
Adhesion	ASTM D 3359-95a (Reverse Impacted 1/16" crosshatched)	No adhesion loss
Pencil Hardness	ASTM D 3363	HB-H
Reverse Impact	ASTM D 2794-93 (3,000 x inches of metal thickness)	No cracking or loss of adhesion
Flexibility T-Bend	ASTM D 4145-83 (No crack, no pick-off)	2T bend, no loss of adhesion
Mandrel	ASTM D 522-93A (180 bend around 1/8" mandrel)	No cracking
Film Integrity		25-years - limited warranty

Hunter Units: a standard of key color scales and color values that are used by industry for color control. Oil Canning is a characteristic of metal roofing and not a cause for material rejection.



18998 36 Avenue, Surrey, British Columbia V3Z 0P6
 PHONE: 604-881-1495
 FAX: 604-881-1496
 TOLL-FREE: 1-855-881-1495

